



**E & A CONSULTING GROUP, INC.**

*Engineering Answers*

10909 Mill Valley Road, Suite 100 • Omaha, NE 68154-3950  
P 402.895.4700 • F 402.895.3599  
[www.eacg.com](http://www.eacg.com)

Dear Homeowner:

The SID has contracted concrete work to be done on the streets in your SID. A contractor will be on site to do work which includes removing the existing concrete that is damaged and replacing it with new pavement.

Throughout the course of this project, there could be some minimal damage done to yards and or sprinkler systems. The contractor that is on site will be responsible for replacing any damaged sprinkler lines and/or heads. They will also be replacing any sod that is torn up while on site. Once the new sod is laid, it will be the responsibility of the homeowner at each lot to water the new sod until it has re-established itself.

Before starting the work on site, each contractor must put in a call and have all the utilities in the area located. You might notice some areas in your yard that have been flagged and/or spray painted. This does not indicate the area in which they will be working. It is just to give them an idea of what kind of utilities are in the area that could possibly be hit while the contractor is on site working.

All work that is completed in public Right-of-Way and follow City of Omaha and Sarpy County specifications.

The work in your SID should not take longer than 30 days to complete. Please let me know if you have any questions or concerns on this at all.

Thank You,

A handwritten signature in black ink, appearing to read 'Nelson C Flores', is written over a horizontal line.

**Nelson C Flores**

Construction Administration Tech.

***Engineering Answers***...by assisting our clients

E & A Consulting Group, Inc.

10909 Mill Valley Road, Suite 100 • Omaha, NE 68154

402.895.4700 (o)

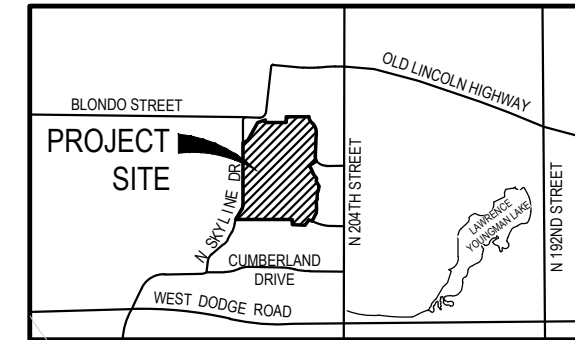
[eacg.com](http://eacg.com)



# SUMMER GLEN - BELLEWOOD

## 2023 STREET RECONSTRUCTION

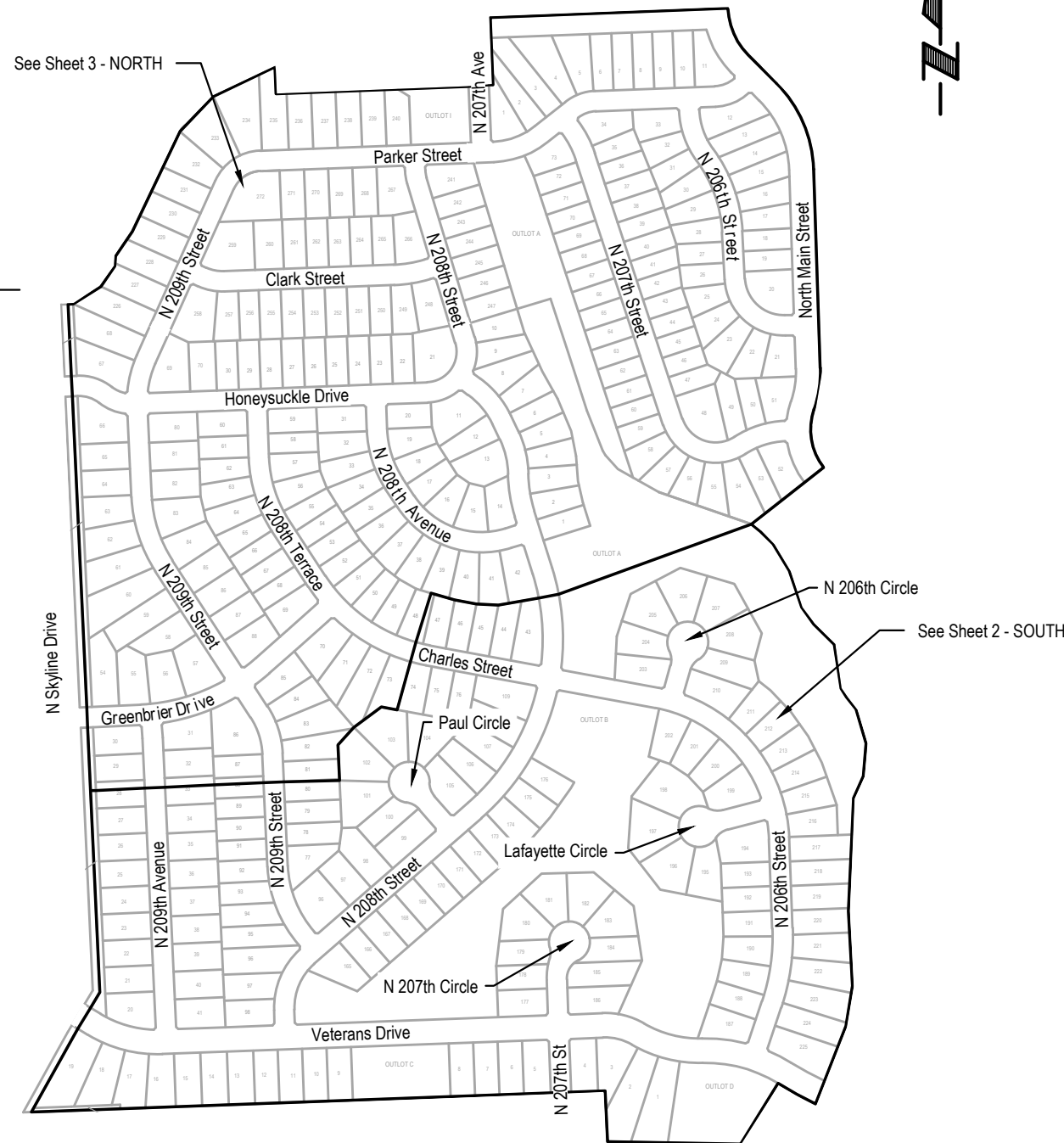
SID NO. 541  
DOUGLAS COUNTY, NEBRASKA



VICINITY MAP

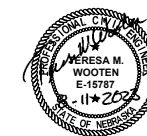
### APPROXIMATE BID QUANTITIES

ITEM	DESCRIPTION	QUANTITY	UNIT
1	CONCRETE PAVEMENT REPAIR, LARGE AREA	156	SY
2	CONCRETE PAVEMENT REPAIR, SMALL AREA	566	SY
3	FULL DEPTH SAW CUT EXISTING PAVEMENT	1,306	LF
4	ADJUST GAS VALVE TO GRADE	2	EA
5	ADJUST WATER VALVE TO GRADE	4	EA
6	ADJUST MANHOLE TO GRADE	4	EA
7	REMOVE AND REPLACE PCC SIDEWALK	343	SF
8	REMOVE AND REPLACE PCC CURB RAMP	288	SF
9	CONSTRUCT DETECTABLE WARNING PANEL (6)	48	SF
10	REMOVE AND REPLACE FAULTY SUBGRADE	25	TN
11	REPLACE CURB INLET TOP WITH ARMOR FACE	2	EA



### INDEX OF SHEETS

SHEET NO.	DESCRIPTION
1	COVER
2	SOUTH
3	NORTH
4	TOTAL QUANTITIES
5	COMPOSITE MAP



#### APPLICANT

SID # 541  
Chris Powers, Chairman  
11440 West Center Road, Ste. C  
Omaha, NE 68144  
P: 402.334.0700  
F: 402.334.0815  
mjohnson@fdjlw.com

#### DESIGNER

E & A Consulting Group, Inc  
Teresa Wooten, P.E.  
10909 Mill Valley Road, Suite 100  
Omaha, NE 68154  
P: 402.895.4700  
F: 402.895.3599  
twooten@eacg.com

#### INSPECTOR

E & A Consulting Group, Inc  
Randall L. Pierce, P.E.  
10909 Mill Valley Road, Suite 100  
Omaha, NE 68154  
P: 402.895.4700  
F: 402.895.3599  
rpierce@eacg.com

#### CONTRACTOR

E & A CONSULTING GROUP, INC.  
Engineering • Planning • Environmental & Field Services  
10909 Mill Valley Road, Suite 100 • Omaha, NE 68154  
Phone: 402.895.4700 • Fax: 402.895.3599  
www.eacg.com  
State of NE Certificate of Authorization #CA0008

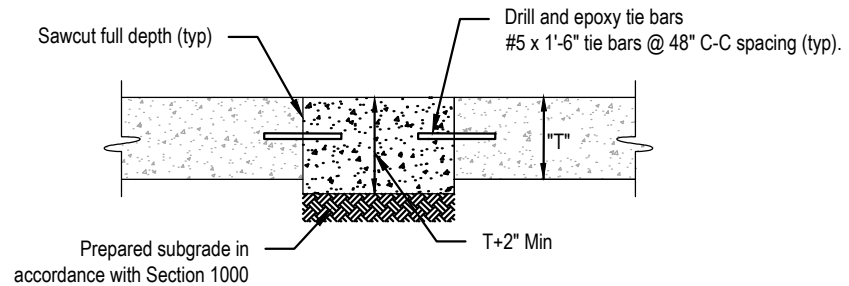


SUMMER GLEN - BELLEWOOD  
2023 STREET  
RECONSTRUCTION  
SID 541  
DOUGLAS COUNTY, NEBRASKA

COVER

Revisions	Date	Description
1	8/11/2023	TAM
2		JME

Proj No: P2006.043.014  
 Date: 8/11/2023  
 Designed By: TAM  
 Drawn By: JME  
 Scale: 1" = 40'  
 Sheet: 1 of 5



**SMALL AREA CONCRETE PAVEMENT REPAIR DETAIL**  
NOT TO SCALE

2023 STREET RECONSTRUCTION									
AREA NO.	NO. POURS	SAW CUT L.F.	CURB L.F.	WIDTH	X	LENGTH	LARGE AREA EST S.Y.	SMALL AREA EST S.Y.	NOTES
1	1	20	7	3.5	x	10.0		3.9	Curb Inlet Throat
8	1	44	19	19.0	x	12.5		26.4	
9	1	48	7	15.0	x	12.5		20.8	
10	1	87	50	56.0	x	12.5	77.8		
11	1	80	6	9.5	x	12.0		12.7	
				14.5	x	16.0		25.8	
12	1	23	11	10.5	x	6.0		7.0	
13	1	42	11	14.0	x	12.5		19.4	
17	1	40	15	15.0	x	12.5		20.8	
22	1	50		12.5	x	12.5		17.4	
23	1	46		10.5	x	12.5		14.6	
				4.0	x	10.0		4.4	Curb Inlet Throat
24	1	49		14.0	x	3.5		5.4	
				14.0	x	16.5		25.7	
25	1	85		12.5	x	30.0		41.7	

2023 STREET RECONSTRUCTION					
AREA NO.	TYPE	APPROX. DIMEN.		EST S.F.	NOTES
D	Curb Ramp	8	x 6	48.0	ADA Plate - Cast Iron
H	Sidewalk	4	x 4	16.0	Adjust Water Valve
J	Sidewalk	4	x 4	16.0	
K	Sidewalk	4	x 8	32.0	
L	Sidewalk	4	x 12	48.0	Adjust Gas Valve
M	Sidewalk	4	x 9	36.0	Adjust Manhole
N	Sidewalk	4	x 12	48.0	QTY (2) Adjust Water Valve

2023 STREET RECONSTRUCTION - CURB INLET TOP		
AREA NO.	TYPE	NOTES
26*	1	Curb Inlet Top
27*	1	Curb Inlet Top



**E & A CONSULTING GROUP, INC.**  
Engineering • Planning • Environmental & Field Services

10809 Mill Valley Road, Suite 100 • Omaha, NE 68154  
Phone: 402.955.4700 • Fax: 402.955.3559  
www.eandagroup.com  
State of NE Certificate of Authorization #CA0008

**E & A CONSULTING GROUP, INC.**  
Engineering Answers

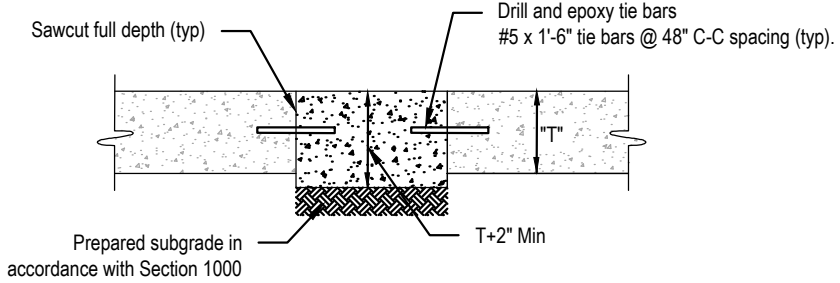
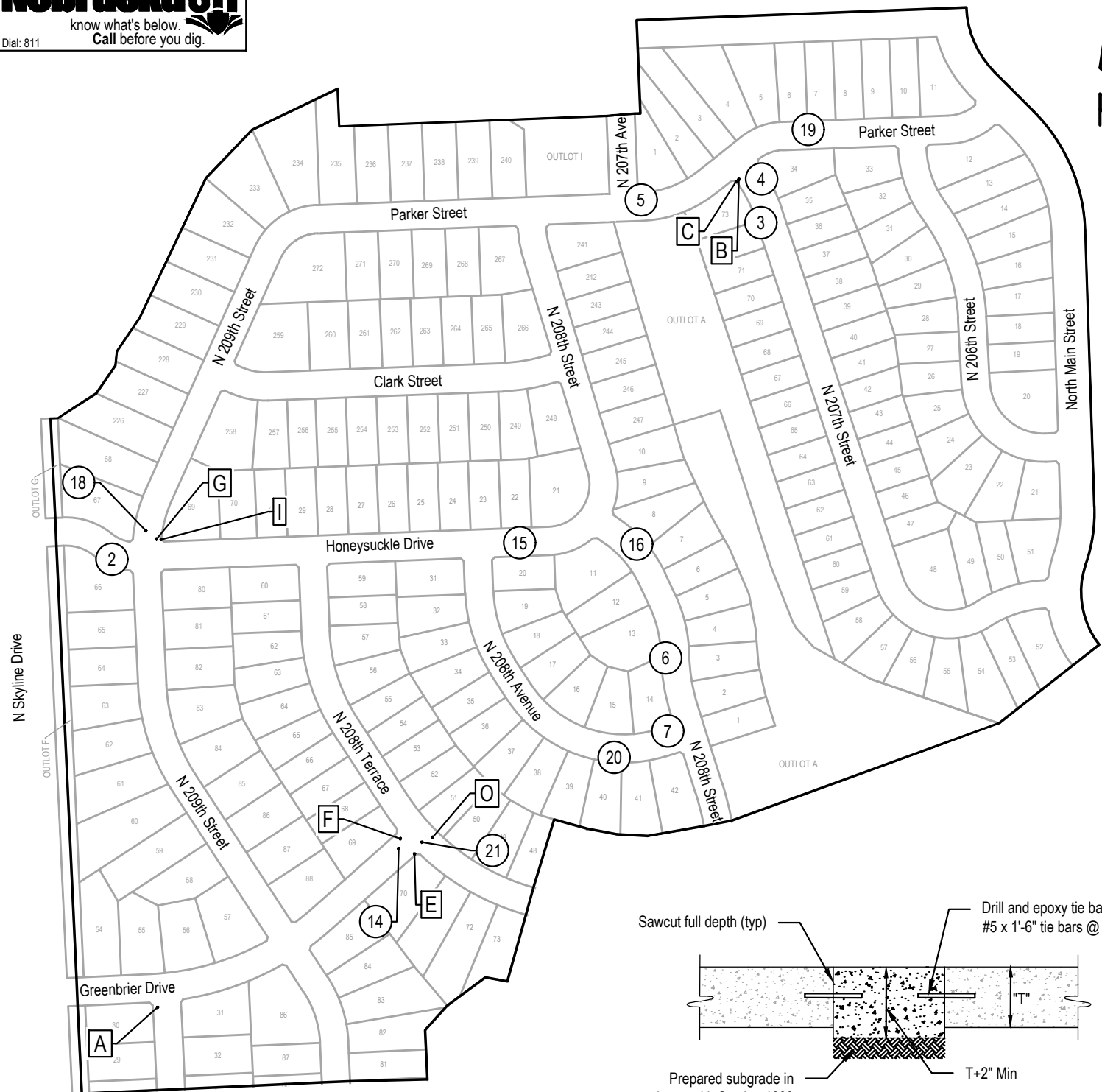
SUMMER GLEN - BELLEWOOD  
2023 STREET  
RECONSTRUCTION  
SID 541  
DOUGLAS COUNTY, NEBRASKA

**SOUTH**

Proj No: P2006.043.014  
Date: 8/11/2023  
Designed By: TAMM  
Drawn By: JMB  
Scale: 1" = 20'  
Sheet: 2 of 5

Revisions  
Date Description

8/11/2023 11:33 AM K:\Projects\2006\043\014\Engineering\CAD Files\Paving\Summer Glen - Bellewood 2023 Street Reconstruction - 000.dwg  
Jessica Brown



SMALL AREA CONCRETE PAVEMENT REPAIR DETAIL  
NOT TO SCALE

2023 STREET RECONSTRUCTION

AREA NO.	NO. POURS	SAW CUT L.F.	CURB L.F.	WIDTH	X	LENGTH	LARGE AREA EST S.Y.	SMALL AREA EST S.Y.	NOTES
2	1	38	1	14.0	x	10.5		16.3	Curb Inlet Throat
3	1	43	6	12.0	x	12.5		16.7	
4	1	35	10	10.0	x	12.5		13.9	
5	1	53	15	10.5	x	18.5		21.6	
6	2	68	28	42.0	x	12.5	58.3		
				14.0	x	12.5	19.4		
7	1	78	27	40.0	x	12.5		55.6	
14	1	54	15	22.0	x	12.5		30.6	
15	1	36	12	4.0	x	20.0		8.9	Curb Inlet Throat
16	1	27		10.0	x	4.0		4.4	Curb Inlet Throat
18	1	80	14	26.0	x	13.0		37.6	
				13.0	x	13.0		18.8	
19	2	62	10	22.0	x	10.0		24.4	Adjust Manhole
				4.0	x	20.0		8.9	Curb Inlet Throat
20	1	49	6	15.0	x	12.5		20.8	
21	1	69	16	30.0	x	12.5		41.7	

2023 STREET RECONSTRUCTION

AREA NO.	TYPE	APPROX. DIMEN.	EST S.F.	NOTES
A	Curb Ramp	8 x 6	48.0	ADA Plate - Cast Iron, Adjust Water Valve
B	Curb Ramp	8 x 6	48.0	ADA Plate - Cast Iron
C	Sidewalk	4 x 18	72.0	Adjust Manhole
E	Curb Ramp	8 x 6	48.0	ADA Plate - Cast Iron
F	Curb Ramp	8 x 6	48.0	ADA Plate - Cast Iron
G	Curb Ramp	8 x 6	48.0	ADA Plate - Cast Iron
I	Sidewalk	4.5 x 6	27.0	Adjust Manhole
O	Sidewalk	4 x 12	48.0	Adjust Gas Valve



**E & A CONSULTING GROUP, INC.**  
 Engineering • Planning • Environmental & Field Services  
 11809 Mill Valley Road, Suite 100 • Omaha, NE 68154  
 Phone: 402.955.4700 • Fax: 402.955.3559  
 Website: www.eandagroup.com  
 State of NE Certificate of Authorization #CA0008

**E & A CONSULTING GROUP, INC.**  
 Engineering Answers

SUMMER GLEN - BELLEWOOD  
 2023 STREET  
 RECONSTRUCTION  
 SID 541  
 DOUGLAS COUNTY, NEBRASKA

NORTH

Revisions:  
 Date Description  
 8/11/2023 TAM/JMB  
 Design: TAM/JMB  
 Drawn: JMB  
 Scale: 1" = 20'  
 Sheet: 3 of 5

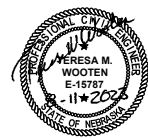
8/11/2023 11:33 AM K:\Projects\2006\04\3\14\Engineering\CAD Files\Paving\Summer Glen - Bellewood 2023 Street Reconstruction - 000.dwg  
 Jessica Brown



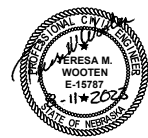
2023 STREET RECONSTRUCTION									
AREA NO.	NO. POURS	SAW CUT L.F.	CURB L.F.	WIDTH	X	LENGTH	LARGE AREA EST S.Y.	SMALL AREA EST S.Y.	NOTES
1	1	20	7	3.5	x	10.0		3.9	Curb Inlet Throat
2	1	38	1	14.0	x	10.5		16.3	Curb Inlet Throat
3	1	43	6	12.0	x	12.5		16.7	
4	1	35	10	10.0	x	12.5		13.9	
5	1	53	15	10.5	x	18.5		21.6	
6	2	68	28	42.0	x	12.5	58.3		
				14.0	x	12.5	19.4		
7	1	78	27	40.0	x	12.5		55.6	
8	1	44	19	19.0	x	12.5		26.4	
9	1	48	7	15.0	x	12.5		20.8	
10	1	87	50	56.0	x	12.5	77.8		
11	1	80	6	9.5	x	12.0		12.7	
				14.5	x	16.0		25.8	
12	1	23	11	10.5	x	6.0		7.0	
13	1	42	11	14.0	x	12.5		19.4	
14	1	54	15	22.0	x	12.5		30.6	
15	1	36	12	4.0	x	20.0		8.9	Curb Inlet Throat
16	1	27		10.0	x	4.0		4.4	Curb Inlet Throat
17	1	40	15	15.0	x	12.5		20.8	
18	1	80	14	26.0	x	13.0		37.6	
				13.0	x	13.0		18.8	
19	2	62	10	22.0	x	10.0		24.4	Adjust Manhole
				4.0	x	20.0		8.9	Curb Inlet Throat
20	1	49	6	15.0	x	12.5		20.8	
21	1	69	16	30.0	x	12.5		41.7	
22	1	50		12.5	x	12.5		17.4	
23	1	46		10.5	x	12.5		14.6	
				4.0	x	10.0		4.4	Curb Inlet Throat
24	1	49		14.0	x	3.5		5.4	
				14.0	x	16.5		25.7	
25	1	85		12.5	x	30.0		41.7	

2023 STREET RECONSTRUCTION					
AREA NO.	TYPE	APPROX. DIMEN.		EST S.F.	NOTES
A	Curb Ramp	8	x 6	48.0	ADA Plate - Cast Iron, Adjust Water Valve
B	Curb Ramp	8	x 6	48.0	ADA Plate - Cast Iron
C	Sidewalk	4	x 18	72.0	Adjust Manhole
D	Curb Ramp	8	x 6	48.0	ADA Plate - Cast Iron
E	Curb Ramp	8	x 6	48.0	ADA Plate - Cast Iron
F	Curb Ramp	8	x 6	48.0	ADA Plate - Cast Iron
G	Curb Ramp	8	x 6	48.0	ADA Plate - Cast Iron
H	Sidewalk	4	x 4	16.0	Adjust Water Valve
I	Sidewalk	4.5	x 6	27.0	Adjust Manhole
J	Sidewalk	4	x 4	16.0	
K	Sidewalk	4	x 8	32.0	
L	Sidewalk	4	x 12	48.0	Adjust Gas Valve
M	Sidewalk	4	x 9	36.0	Adjust Manhole
N	Sidewalk	4	x 12	48.0	QTY (2) Adjust Water Valve
O	Sidewalk	4	x 12	48.0	Adjust Gas Valve

2023 STREET RECONSTRUCTION - CURB INLET TOP		
AREA NO.	TYPE	NOTES
26*	1	Curb Inlet Top
27*	1	Curb Inlet Top



<b>2023 STREET RECONSTRUCTION</b> <b>TOTAL QUANTITIES</b>	<b>SUMMER GLEN - BELLEWOOD</b> <b>2023 STREET RECONSTRUCTION</b> <small>SID 541</small> <small>DOUGLAS COUNTY, NEBRASKA</small>	<b>E &amp; A CONSULTING GROUP, INC.</b> Engineering • Planning • Environmental & Field Services <small>10809 Mill Valley Road, Suite 100 • Omaha, NE 68154</small> <small>Phone: 402.955.4700 • Fax: 402.955.3559</small> <small>www.eandagroup.com</small> <small>State of NE Certificate of Authorization #CA0008</small>				
Proj No: P2006.043.014 Date: 8/11/2023 Designed By: TAM Drawn By: JMB Scale: N/A Sheet: 4 of 5	Revisions <table border="1" style="width: 100%; border-collapse: collapse;"> <tr> <th style="width: 10%;">Date</th> <th style="width: 90%;">Description</th> </tr> <tr> <td> </td> <td> </td> </tr> </table>	Date	Description			8/11/2023 11:33 AM K:\Projects\2006\043\p14\Engineering\CAD Files\Paving\Summer Glen - Bellewood 2023 Street Reconstruction - 000.dwg Jessica Brown
Date	Description					



Revisions	Date	Description
1	8/11/2023	Final

COMPOSITE MAP

SUMMER GLEN - BELLEWOOD  
2023 STREET  
RECONSTRUCTION  
SID 541  
DOUGLAS COUNTY, NEBRASKA



E & A CONSULTING GROUP, INC.  
Engineering • Planning • Environmental & Field Services  
10809 Mill Valley Road, Suite 100 • Omaha, NE 68154  
Phone: 402.265.4700 • Fax: 402.265.3559  
www.eandagroup.com  
State of NE Certificate of Authorization #CA0008